

S9700-53DX

DISAGGREGATED Core/Edge Router

The S9700-53DX is the best of breed robust, flexible and carrier-grade disaggregated IP/MPLS router that can be deployed in the core or edge to transport services over a scalable next-gen service provider network. Equipped with 100GE service ports and 400GE fabric ports, S9700-53DX enables fault and performance monitoring, non-stop routing support for control and data plane, and comprehensive high-availability networks.

As a standalone router, the S9700-53DX can be deployed at the edge network to enable transport services over a scalable next generation Telecom network. It provides 8GB deep buffering with 2000Mpps packet throughput and 4.8Tbs switching capacity. It includes a knowledge-based processor (or TCAM) to perform up to 16 parallel searches to reach decision speeds of multiple billion decisions per second, which makes it ideal for provider edge applications.

When coupled with UfiSpace's fabric switch (S9705-48D), the S9700-53DX becomes a building block for a distributed disaggregated chassis (DDC). The DDC allows telecoms and service providers to implement a pay-as-you-grow model when scaling core network capacities from 4Tbs up to 192Tbs.



KEY BENEFITS

- Flexible capacity growth using horizontal scaling, pay-as-you-grow model
- Accelerated table lookup, packet buffering, and control memory with low latency high bandwidth memory
- Flexible and programmable packets processor
- High density ports with low power consumption
- Ideal for Core, Edge, and Central Office deployments (NEBS Level 3)
- Upstream connectivity management supported by three flexibly configured fabric pipes
- Dynamic distribution and routing through automatic fault detection and recovery

KEY FEATURES

- Function as standalone or a cluster (4Tb up to 192Tb)
- Interoperable with S9700-23D and S9705-48D
- Service Ports support 4x25GE break-out
- 8GB deep buffering and Intel Broadwell-DE 8 core at 2 GHz
- 64GB memory DDR4 RDIMM with ECC
- Individual BMC allowing automatic and remote operations for monitoring and managing platform health status
- 1 + 1 hot swappable PSU FRU
- 3 + 1 hot swappable Fan FRU

SPECIFICATIONS

PHYSICAL

- ◆ 40 x 100GE QSFP28 service ports
- ◆ 13 x 400GE QSFP-DD fabric ports
- ◆ 1 x RJ45 + Micro USB serial console ports
- ◆ 1 x 1GBase-T Ethernet port for Out-of-Band management
- ◆ 1 x USB 2.0 Type-A general purpose port
- ◆ 2 x 10GBase-X SFP+ management ports

Processor Intel Broadwell-DE 8 core @ 2.0 GHZ

Memory 2 x 32GB DDR4 RDIMM with ECC support

Storage 2 x M.2 SATA SSD 128GB

ASIC Broadcom Jericho2 BCM88690

LED
Power status
Fan status
System status
Per port link status
Beacon
Per fan status
Per PSU status

Chassis (WxDxH) 2RU, 436 x 762 x 87.6 mm
17.17 x 30 x 3.45 in.
Weight: 26.7 kg (58.9 lbs)

Redundancy Hot swappable, 1+1 redundant PSU
Hot swappable, 3+1 redundant fans

ENVIRONMENTAL

Power Supply AC input: 200 ~ 240V, 12.5A, 50 ~ 60Hz
DC input: -40 ~ -72V, 60 ~ 33A
Typical power: 750 Watts (no transceiver)

Max. Operating Specs. Operating temperature: 0°C to 45°C (32°F to 113°F)
Operating humidity: 5% to 85% (RH), noncondensing
Altitude: 1,829 m (6,000 ft.)

Max. Non-Operating Specs. Storage temperature: -40°C to 70°C (-40°F to 158°F)
Storage humidity: 5% to 95% (RH), non-condensing

PERFORMANCE

Switching Capacity 4.8 Tbps

Packet Throughput 2000 Mpps

REGULATORY COMPLIANCE

Safety NEBS Level 3
UL 62368-1
IEC/EN 60950-1
IEC/EN 62368-1
BSMI CNS 14336-1

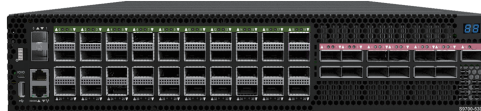
EMC NEBS Level 3
FCC Part 15, Subpart B,
Class A EN 55032, Class A
EN 300 386
EN 55024 EN 55035
BSMI (CNS 13438), Class A
VCCI-CISPR 32:2016, Class A
VCCI 32-1:2016, Class A

Specifications are subject to change without notice.

S9700-53DX

Telecom
Networking
Solutions

S9700-53DX Front and Back Views



SUPPORTED ACCESSORIES

Transceivers

400GE QSFP-DD SR8, 400GE QSFP-DD LR8, 400GE QSFP-DD DR4, 400GE QSFP-DD FR4,
100GE QSFP28 SR4, 100GE QSFP28 LR4, 100GE QSFP28 ER4

Cable Types

400GE QSFP-DD DAC (Direct Attach Cable) 400GE QSFP-DD ACC (Active Copper Cable)
400GE QSFP-DD AOC (Active Optical Cable) 100GE QSFP28 DAC (Direct Attach Cable)
100GE QSFP28 ACC (Active Copper Cable) 100GE QSFP28 AOC (Active Optical Cable)

Power Supply Types

PSU-202-DESR 2000W DC, exhaust air, slim type, colored latch
PSU-202-AESR 2000W AC, exhaust air, slim type, colored latch

Fan Types

FAN-803816-HC, exhaust air flow

Rack mounting kit

R19-970000-2630 adjustable mounting rail for 19" rack supporting
depth from 26" to 30"

